

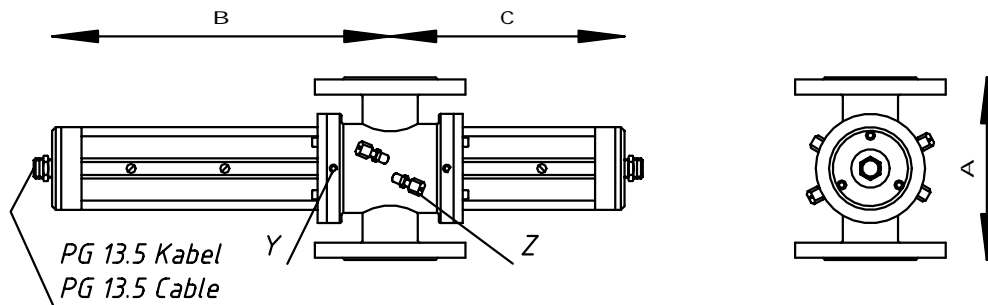
Ackerstr. 144  
40233 Düsseldorf  
Tel.: +49-(0)211-687804-0  
Fax: +49-(0)211-687804-30  
E-Mail: info@galvanic.de  
Web: www.galvanic.de

Prozess-Trübungsmesser  
Process turbidimeter  
Einzusetzende Umformer/Use converters  
Mod. Messenger

## TSW (210-F)

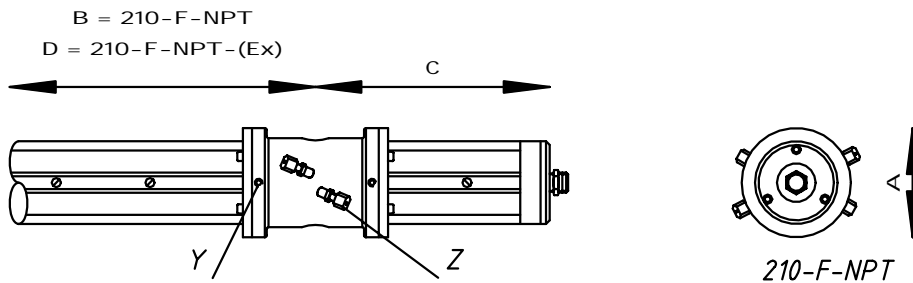
### 210-F-DIN

alle Angaben in mm  
all dimension in mm



### 210-F-NPT

alle Angaben in mm  
all dimension in mm



### Flansche/Flanges

DIN2632 PN10, DIN2633 PN16,  
DIN2634 PN25, DIN2635 PN40

Höhere Druckstufen auf Anfrage/Higher pressure on request

DN	25	32	40	50	65	80	100	125	150
A	200	200	200	200	220	220	230	295	295
B	405	405	405	405	413	420	430	455	480
C	278	278	278	278	303	310	320	345	370

NPT Gewinde  
NPT thread

NPT	0.5"	1"
A	115	115
B	405	405
C	278	278

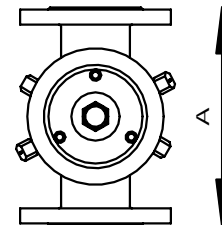
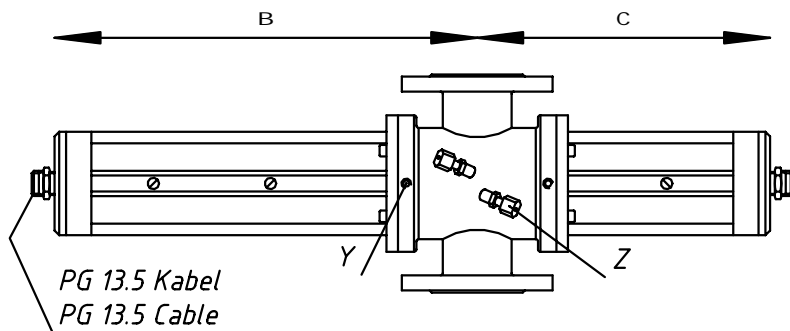
Y = Lufteintritt M5 zur Verhinderung  
von Kondensation  
( $\phi$ -Schlauch D/d = 6 mm/4 mm)  
air inlet M5 to prevent  
condensation  
( $\phi$ -hose D/d = 6 mm/4 mm)

Z = Reinigungsanschlüsse 1/8" Innengew.  
Cleaning-jets 1/8" female thread

\* weitere Prozeßanschlüsse  
additional process connections:  
ASA / APV / TH / Milchgwinde  
ASA / APV / TH / Milk-fitting

### 210-F-ASA

alle Angaben in mm  
all dimension in mm



Y = Lufteintritt M5 zur Verhinderung von Kondensation (ϕ-Schlauch D/d = 6 mm/4 mm)  
air inlet M5 to prevent condensation (ϕ-hose D/d = 6 mm/4 mm)

Z = Reinigungsanschlüsse 1/8" Innengewinde  
Cleaning-jets 1/8" female thread

### Flansche/Flanges

ASA150 lbs RF, ASA300 lbs RF

Höhere Druckstufen auf Anfrage  
Higher pressure on request

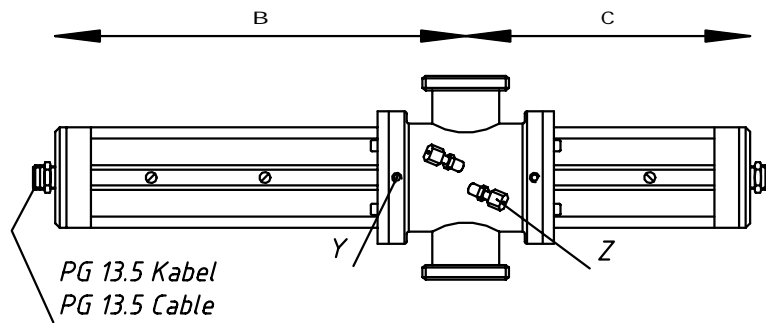
DN	1"	1.5"	2"	2.5"	3"	4"	5"	6"
A	200	200	200	220	220	230	295	295
B	405	405	405	413	420	430	455	480
C	278	278	278	303	310	320	345	370

\* weitere Prozeßanschlüsse  
additional process connections:  
DIN / TH / APV / Milchgewinde  
DIN / TH / APV / Milk-fitting

alle Angaben in mm  
all dimension in mm

210-F-M

\*\* Milchgewinde  
Milk-fitting



Y = Lufteintritt M5 zur Verhinderung von Kondensation ( $\phi$ -Schlauch D/d = 6 mm/4 mm)  
air inlet M5 to prevent condensation  
( $\phi$ -hose D/d = 6 mm/4 mm)

Z = Reinigungsanschlüsse 1/8" Innengew.  
Cleaning-jets 1/8" female thread

### Flansche/Flanges

DIN11851 PN12

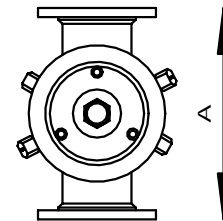
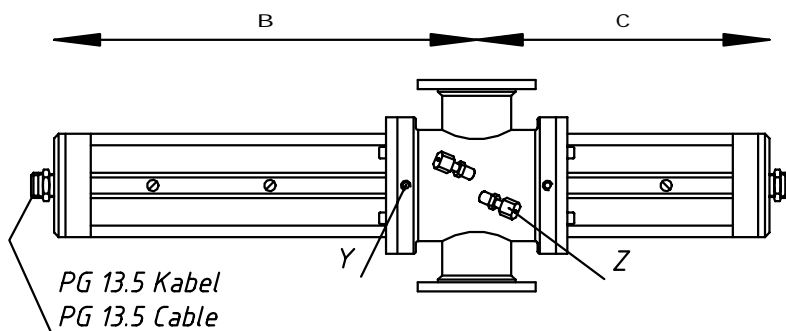
Höhere Druckstufen auf Anfrage/Higher pressure on request

DN	25	32	40	50	65	80	100	125	150
A	200	200	200	200	200	200	200	290	300
B	405	405	405	405	413	420	430	455	480
C	278	278	278	278	303	310	320	345	370

\* weitere Prozeßanschlüsse  
additional process connections:  
DIN / ASA / APV / TH

### 210-F-APV

alle Angaben in mm  
all dimension in mm



### Flansche/Flanges

APV PN10

Höhere Druckstufen auf Anfrage/Higher pressure on request

DN	25	32	40	50	65	80	100	125	150
A	200	200	200	200	200	200	200	290	300
B	405	405	405	405	413	420	430	455	480
C	278	278	278	278	303	310	320	345	370

\* weitere Prozeßanschlüsse  
additional process connections:  
DIN / ASA / TH / Milchgewinde  
DIN / ASA / TH / Milk-fitting